

BNPM/EOI/ Filtering Equipment /612/2018-19	BANK NOTE PAPER MILL INDIA PRIVATE LIMITED	SHEET 1 OF 1
	EOI -DESIGN, MANUFACTURING, SUPPLY, ERECTION AND COMMISSIONING OF FILTERING EQUIPMENT WITH ALL ITS ACCESSORIES AT BNPM, MYSORE. CORRIGENDUM NO. 1	

CORRIGENDUM No. 1, DATED 06.12.2018

FOR

**EOI NO. BNPM/EOI/ Filtering Equipment/612/2018-19 dated
06.11.2018**

**EOI FOR DESIGN, MANUFACTURING, SUPPLY, ERECTION AND
COMMISSIONING OF FILTERING EQUIPMENT WITH ALL ITS
ACCESSORIES AT BNPM, MYSORE.**



BNPM/EOI/ Filtering Equipment /612/2018-19	BANK NOTE PAPER MILL INDIA PRIVATE LIMITED	SHEET 1 OF 1
	EOI -DESIGN, MANUFACTURING, SUPPLY, ERECTION AND COMMISSIONING OF FILTERING EQUIPMENT WITH ALL ITS ACCESSORIES AT BNPM, MYSORE.	
CORRIGENDUM NO. 1		

1.0 SCOPE OF THIS CORRIGENDUM

- 1.1 This corrigendum dated 06.12.2018, is issued for the tender due date extension and technical clarification for submission of EOI floated on 06.11.2018. This Corrigendum contains 15 pages.
- 1.2 Except for details mentioned herein, all other details contained in the EOI no. BNPM/EOI/ Filtering Equipment/612/2018-19 dated 06.11.2018, shall remain applicable and unchanged.


2.0 REVISION TO THE TENDER:-

- 2.1 Clause no. 1.0 is revised as

Closing date and time for receipt of tenders	17.12.2018 - 1500 Hours
Date and time of opening of Techno-commercial bid	17.12.2018 - 1600 Hours




3. CLARIFICATION TO BIDDERS QUERIES:-

A.Particle Size Analysis:-

Sl. No	Source	PPM	Volume (Flow)	Appearance –Filter paper
1	Wire Pit water	45	70 lpm	



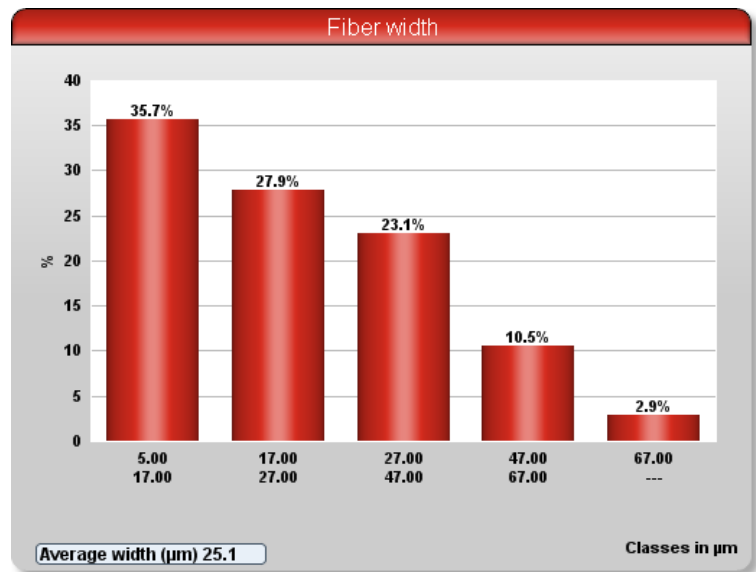
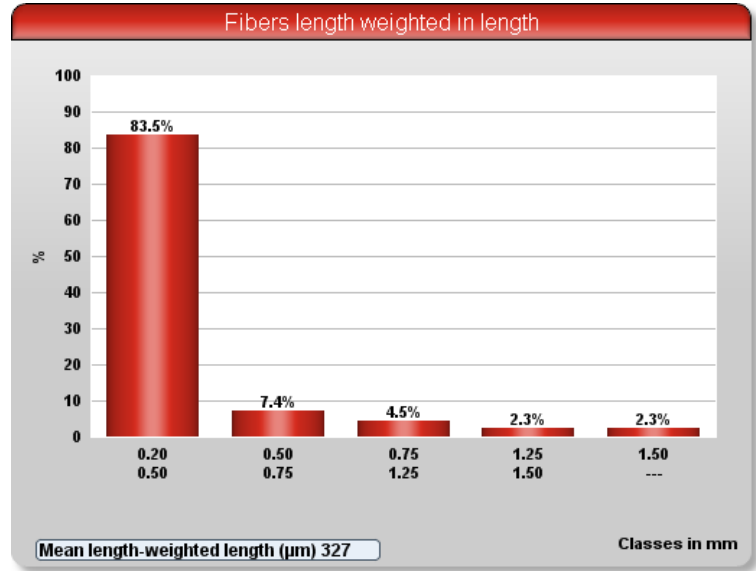
BNPM/EOI/ Filtering Equipment /612/2018-19	BANK NOTE PAPER MILL INDIA PRIVATE LIMITED	SHEET 1 OF 1
	EOI -DESIGN, MANUFACTURING, SUPPLY, ERECTION AND COMMISSIONING OF FILTERING EQUIPMENT WITH ALL ITS ACCESSORIES AT BNPM, MYSORE.	
CORRIGENDUM NO. 1		

2	Press tray water	45	75 lpm	
3	Air Water Separator– connected to Suction Press rolls		150 lpm	
4	Air Water Separator – Connected to top and bottom press felt Uhle boxes		105 lpm	
5	Conustennuer Accepts	30	900 lpm	
6	Separator water - low Vacuum fans	200	300 lpm	
Total			1600 lpm	

B. Fiber Analysis Details (From Page No. 4 to 15)

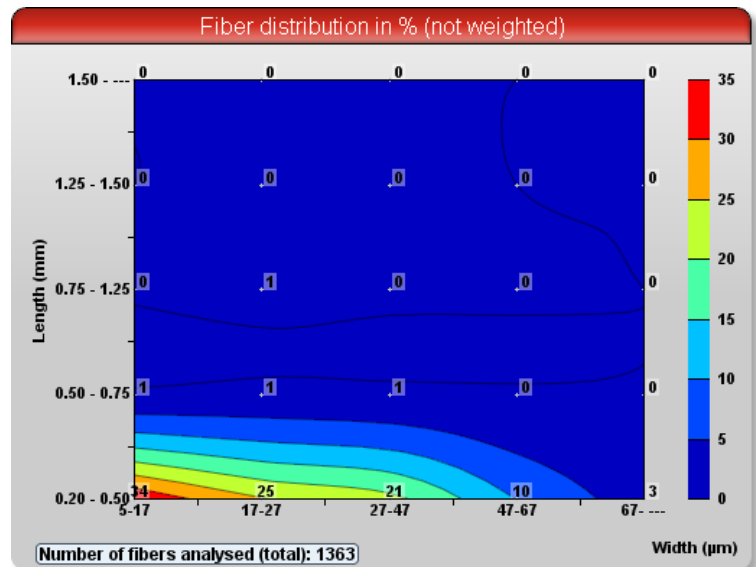
date 04.06.2018
 time 1600
 Consist. (mg/l) 25.9740
 Nb of fibers 1363
 Remark

Date 04/06/18
 Time 16:10:08
 Family HEAD BOX
 Duration 00:07:14



Summary Array

FIBERS (nb)	1363	NB OBJ (million/g)
Length: arithm. & weighted in length	0.311 0.327	
Width (µm)	25.1	
Coarseness (mg/m)	5.0288	
Kink angle (°) Kinked fibers (%)	131 14.0	0.545
Curl (%)	7.1	
Rate in length of MacroFibrills (%)	2.216	
Broken Ends (%)	49.13	
FINE ELEMENTS (% in length)	97.6 7.68	354.580
Percentage of fine elts (% in area)	83.84	



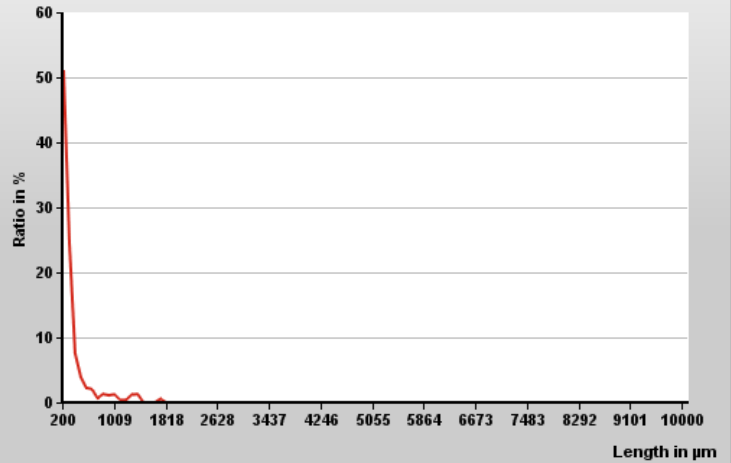
date 04.06.2018
 time 1600
 Consist. (mg/l) 25.9740
 Nb of fibers 1363
 Remark

Date 04/06/18
 Time 16:10:08
 Family HEAD BOX
 Duration 00:07:14

Summary Array

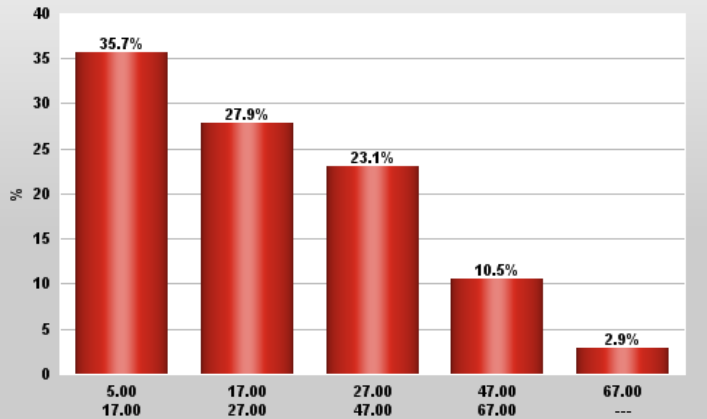
FIBERS (nb)	1363	NB OBJ (million/g)
Length: arithm. & weighted in length	0.311 0.327	
Width (µm)	25.1	
Coarseness (mg/m)	5.0288	
Kink angle (°) Kinked fibers (%)	131 14.0	0.545
Curl (%)	7.1	
Rate in length of MacroFibrills (%)	2.216	
Broken Ends (%)	49.13	
FINE ELEMENTS (% in length)	97.6 7.68	354.580
Percentage of fine elts (% in area)	83.84	

Fiber distribution



Mean length-weighted length (µm) 327

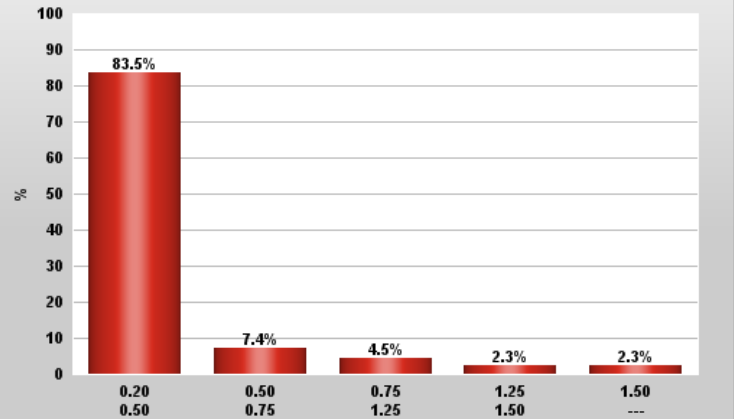
Fiber width



Average width (µm) 25.1

Classes in µm

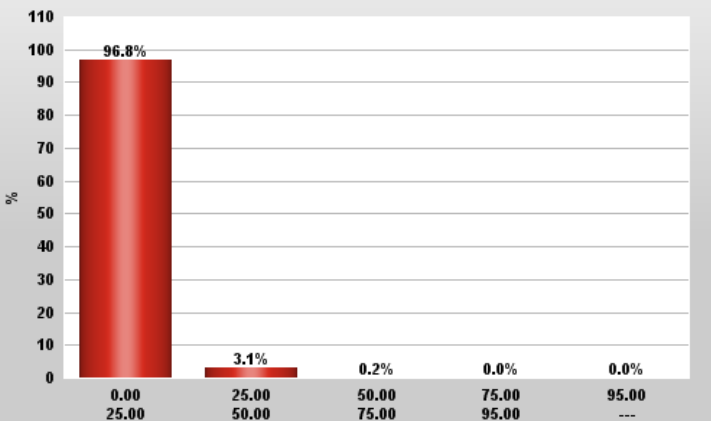
Fibers length weighted in length



Mean length-weighted length (µm) 327

Classes in mm

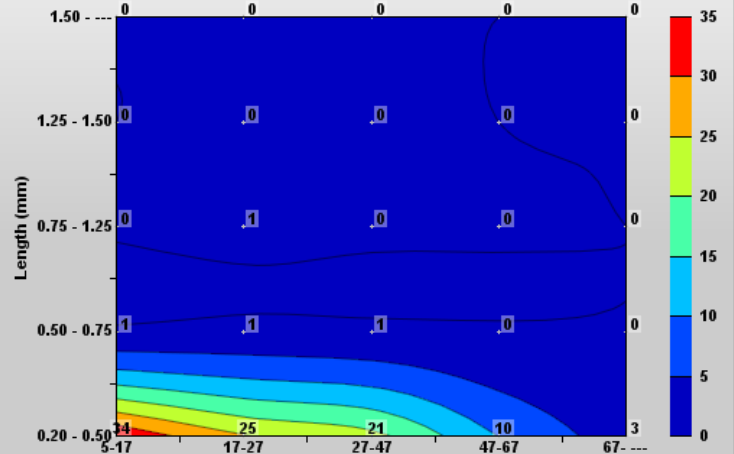
Fiber curl



Average curl (%) 7.1

Classes in %

Fiber distribution in % (not weighted)



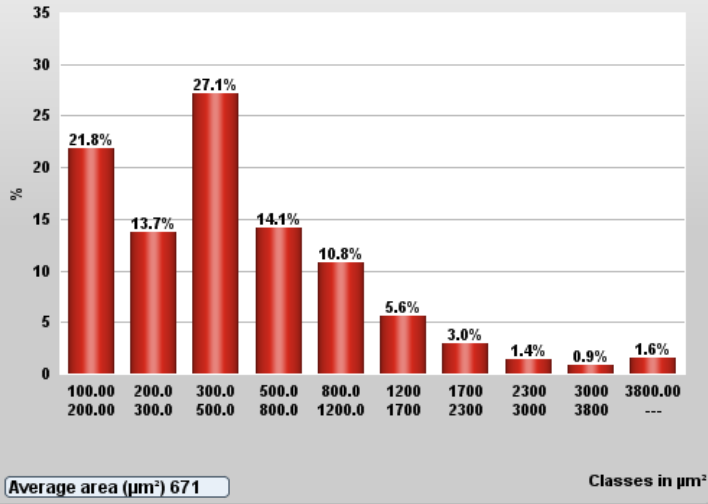
Number of fibers analysed (total): 1363

Width (µm)

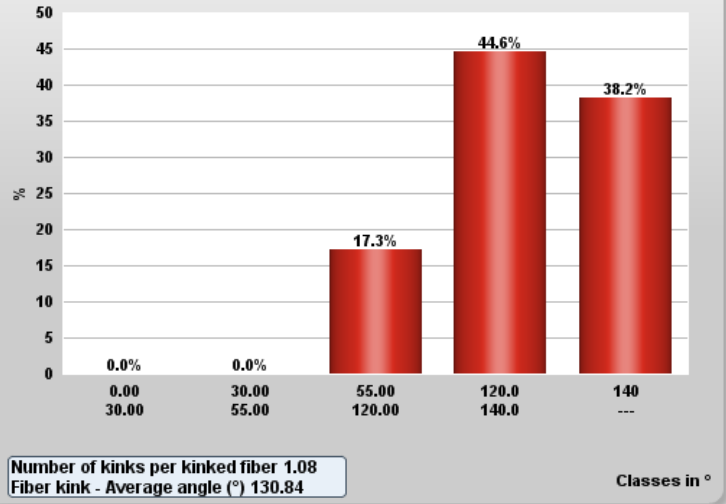
date 04.06.2018
 time 1600
 Consist. (mg/l) 25.9740
 Nb of fibers 1363
 Remark

Date 04/06/18
 Time 16:10:08
 Family HEAD BOX
 Duration 00:07:14

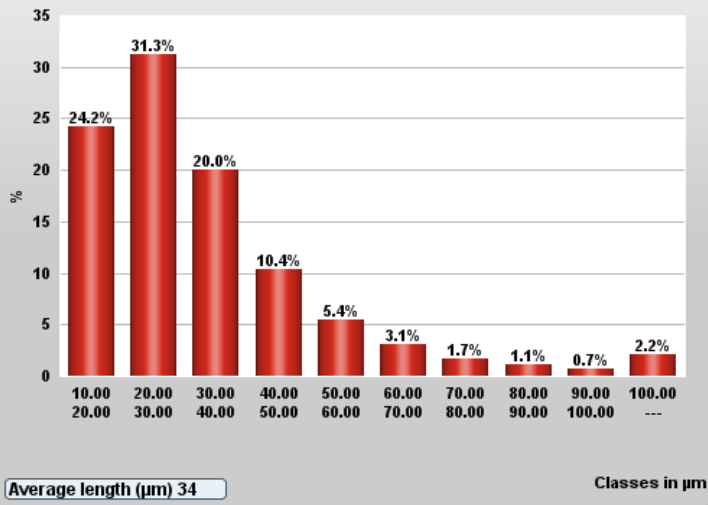
Fines area



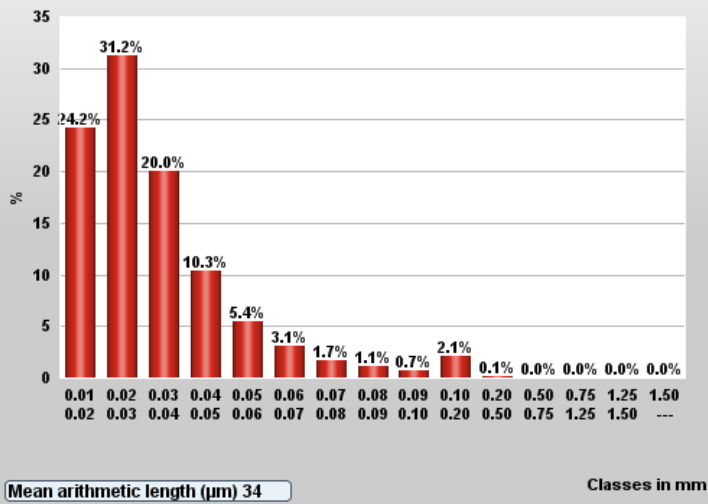
Kink angle



Fines length

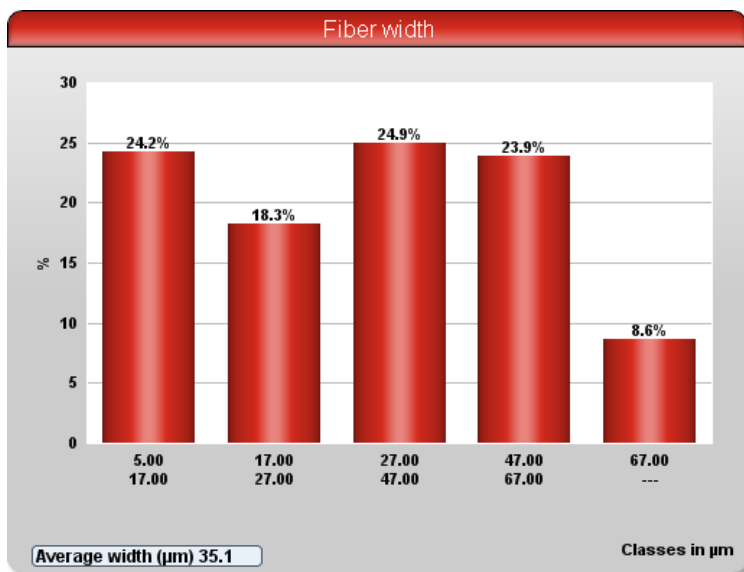
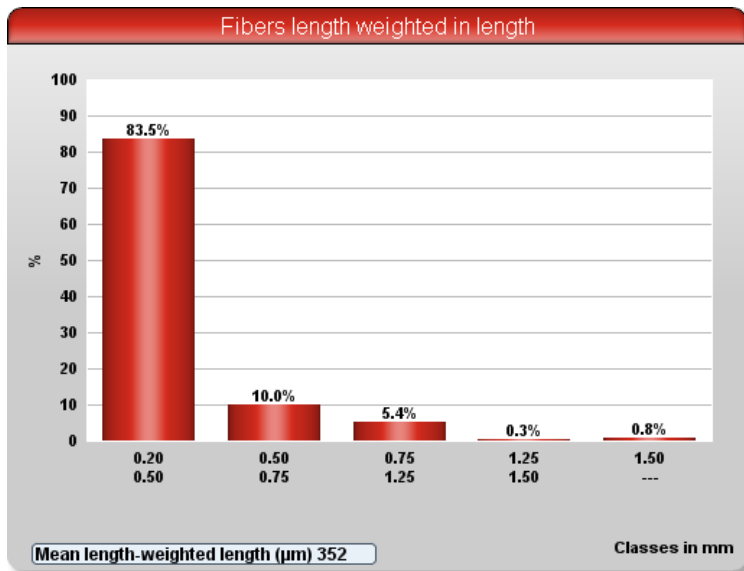


Fines & Fibers Length



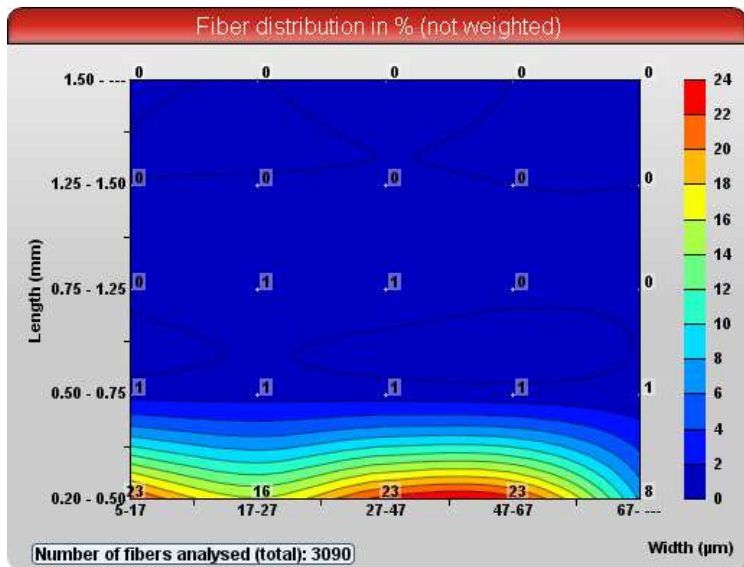
date 04.06.2018
 time 06.35
 Consist. (mg/l) 25.9740
 Nb of fibers 3090
 Remark

Date 04/06/18
 Time 14:10:45
 Family HEAD BOX
 Duration 00:07:14



Summary Array

FIBERS (nb)	3090	NB OBJ (million/g)
Length: arithm. & weighted in length	0.321 0.352	
Width (µm)	35.1	
Coarseness (mg/m)	2.1083	
Kink angle (°) Kinked fibers (%)	130 13.1	1.243
Curl (%)	8.2	
Rate in length of MacroFibrills (%)	2.638	
Broken Ends (%)	58.68	
FINE ELEMENTS (% in length)	97.4 7.40	505.866
Percentage of fine elts (% in area)	73.46	



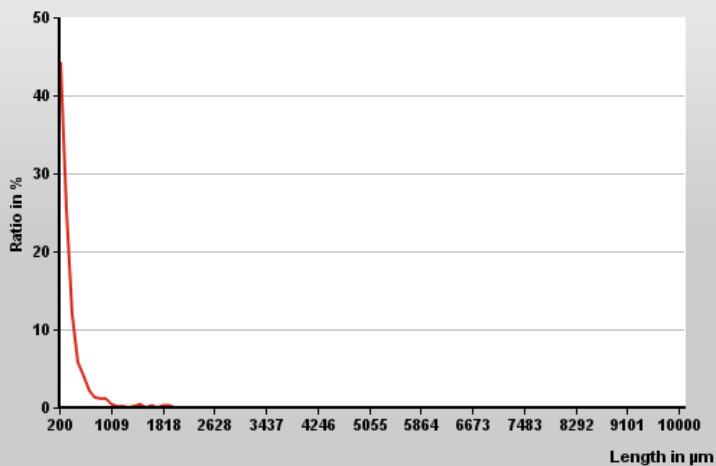
date 04.06.2018
 time 06.35
 Consist. (mg/l) 25.9740
 Nb of fibers 3090
 Remark

Date 04/06/18
 Time 14:10:45
 Family HEAD BOX
 Duration 00:07:14

Summary Array

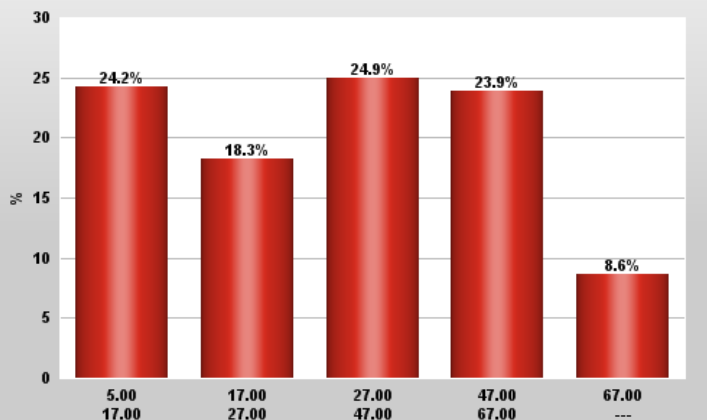
FIBERS (nb)	3090	NB OBJ (million/g)
Length: arithm. & weighted in length	0.321 0.352	
Width (µm)	35.1	
Coarseness (mg/m)	2.1083	
Kink angle (°) Kinked fibers (%)	130 13.1	1.243
Curl (%)	8.2	
Rate in length of MacroFibrills (%)	2.638	
Broken Ends (%)	58.68	
FINE ELEMENTS (% in length)	97.4 7.40	505.866
Percentage of fine elts (% in area)	73.46	

Fiber distribution



Mean length-weighted length (µm) 352

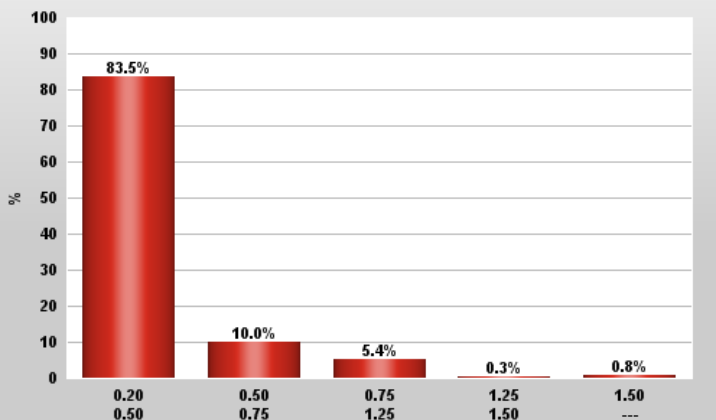
Fiber width



Average width (µm) 35.1

Classes in µm

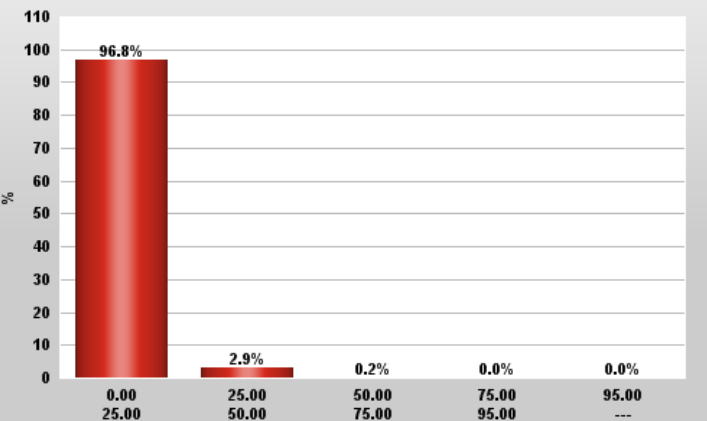
Fibers length weighted in length



Mean length-weighted length (µm) 352

Classes in mm

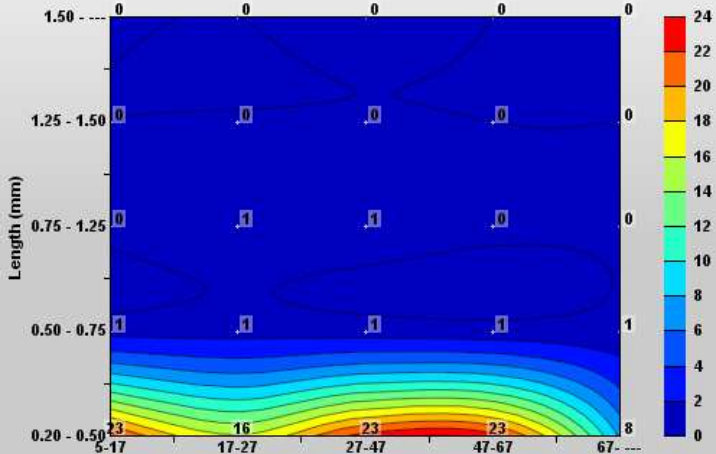
Fiber curl



Average curl (%) 8.2

Classes in %

Fiber distribution in % (not weighted)



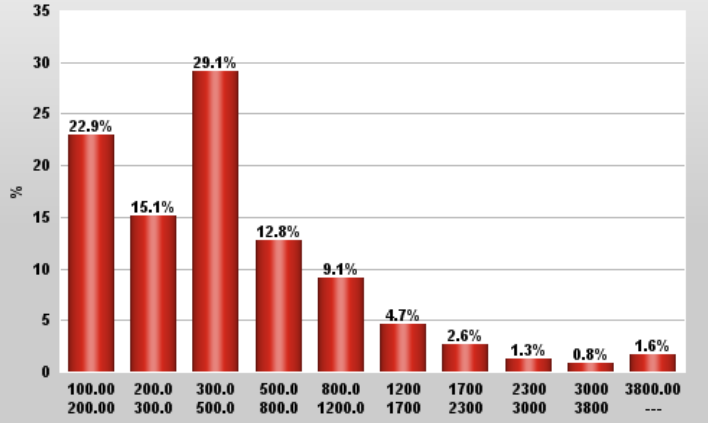
Number of fibers analysed (total): 3090

Width (µm)

date 04.06.2018
 time 06.35
 Consist. (mg/l) 25.9740
 Nb of fibers 3090
 Remark

Date 04/06/18
 Time 14:10:45
 Family HEAD BOX
 Duration 00:07:14

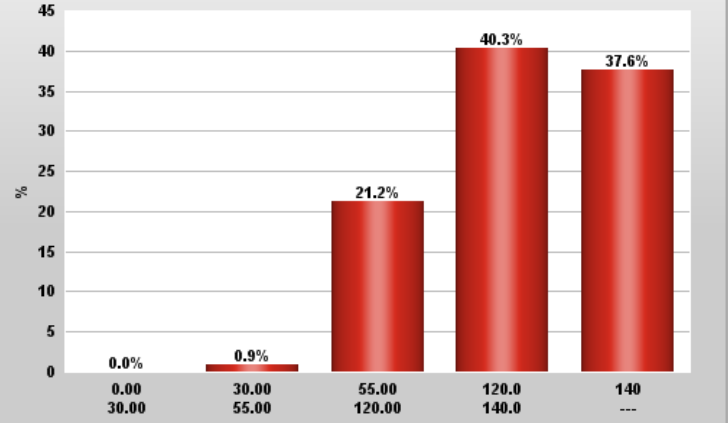
Fines area



Average area (μm^2) 641

Classes in μm^2

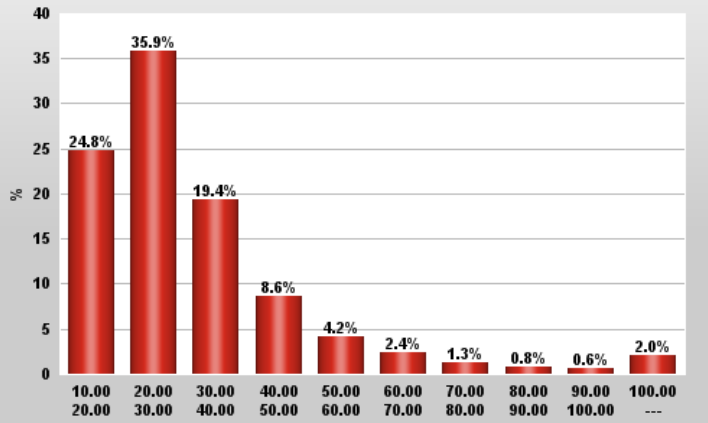
Kink angle



Number of kinks per kinked fiber 1.07
 Fiber kink - Average angle ($^\circ$) 129.68

Classes in $^\circ$

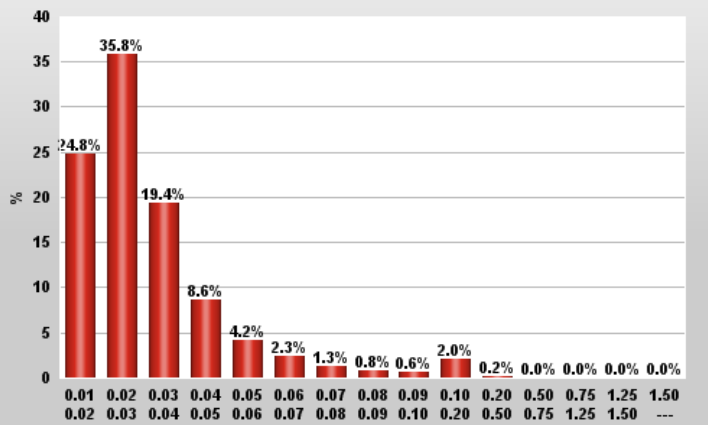
Fines length



Average length (μm) 32

Classes in μm

Fines & Fibers Length

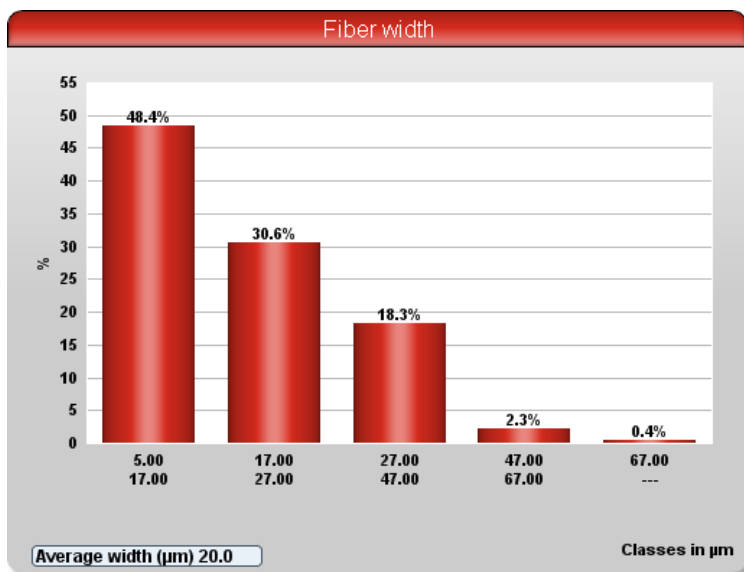
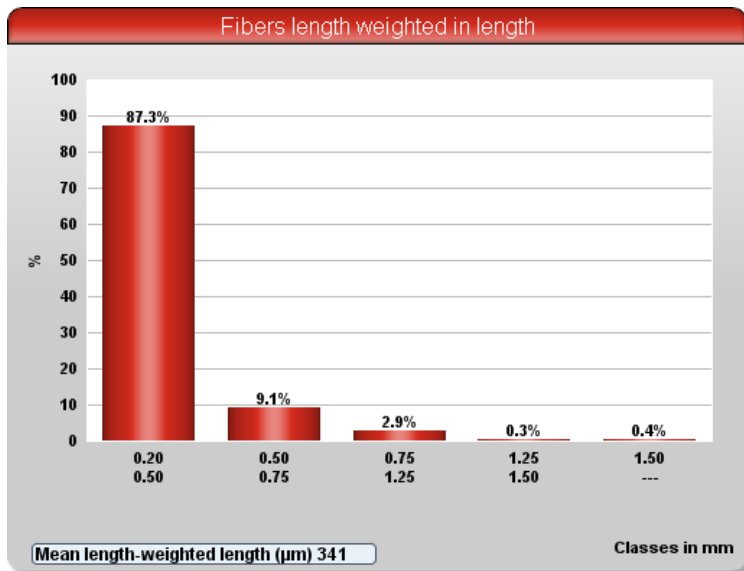


Mean arithmetic length (μm) 33

Classes in mm

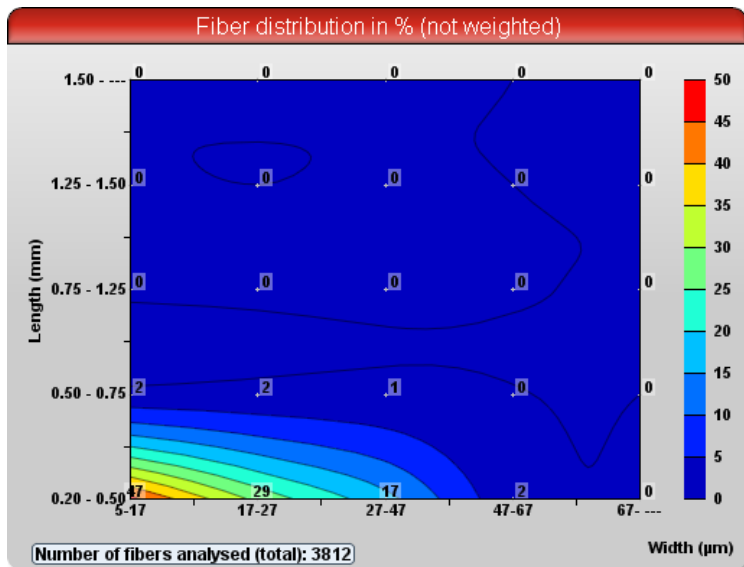
date 04.06.2018
 time 06.34
 Consist. (mg/l) 25.9740
 Nb of fibers 3812
 Remark

Date 04/06/18
 Time 13:59:05
 Family HEAD BOX
 Duration 00:06:43



Summary Array

FIBERS (nb)	3812	NB OBJ (million/g)
Length: arithm. & weighted in length	0.315 0.341	
Width (µm)	20.0	
Coarseness (mg/m)	1.7979	
Kink angle (°) Kinked fibers (%)	132 17.4	1.523
Curl (%)	6.5	
Rate in length of MacroFibrills (%)	1.737	
Broken Ends (%)	44.05	
FINE ELEMENTS (% in length)	98.1 7.55	859.713
Percentage of fine elts (% in area)	89.68	



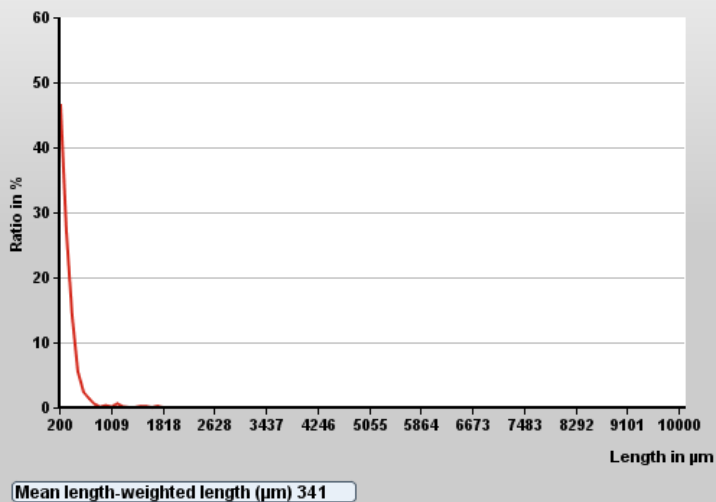
date 04.06.2018
 time 06.34
 Consist. (mg/l) 25.9740
 Nb of fibers 3812
 Remark

Date 04/06/18
 Time 13:59:05
 Family HEAD BOX
 Duration 00:06:43

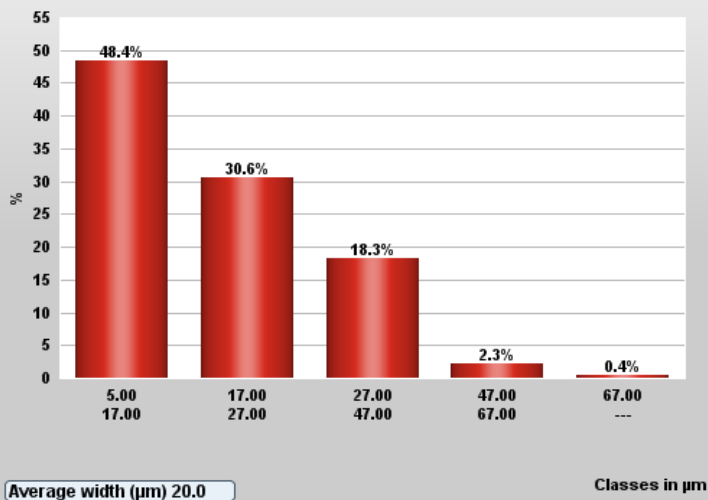
Summary Array

FIBERS (nb)	3812	NB OBJ (million/g)
Length: arithm. & weighted in length	0.315 0.341	
Width (µm)	20.0	
Coarseness (mg/m)	1.7979	
Kink angle (°) Kinked fibers (%)	132 17.4	1.523
Curl (%)	6.5	
Rate in length of MacroFibrills (%)	1.737	
Broken Ends (%)	44.05	
FINE ELEMENTS (% in length)	98.1 7.55	859.713
Percentage of fine elts (% in area)	89.68	

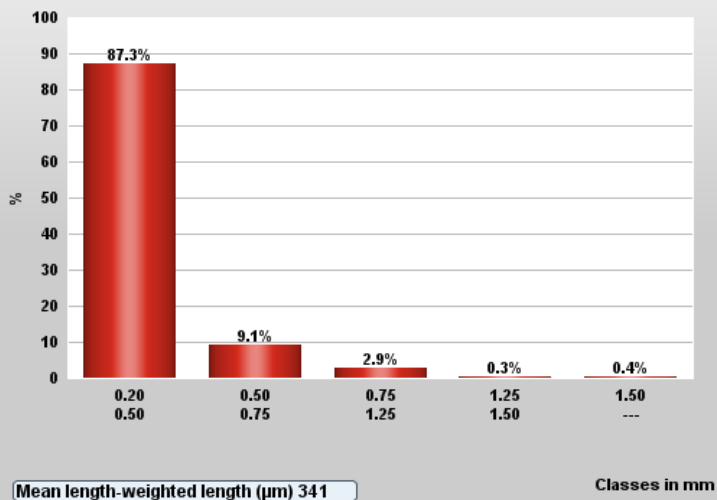
Fiber distribution



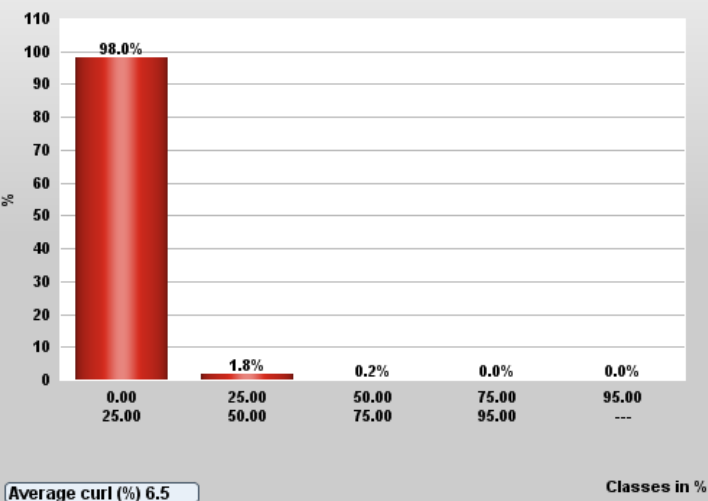
Fiber width



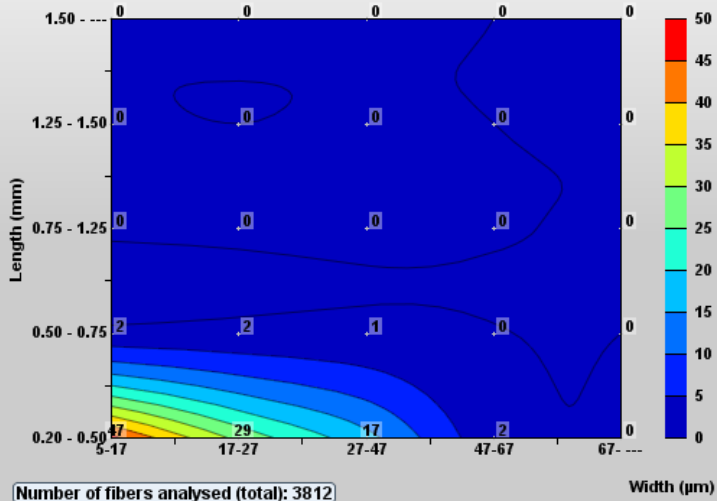
Fibers length weighted in length



Fiber curl



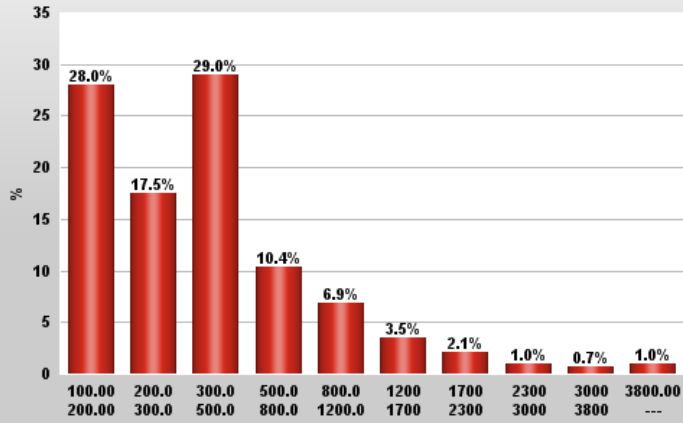
Fiber distribution in % (not weighted)



date 04.06.2018
 time 06.34
 Consist. (mg/l) 25.9740
 Nb of fibers 3812
 Remark

Date 04/06/18
 Time 13:59:05
 Family HEAD BOX
 Duration 00:06:43

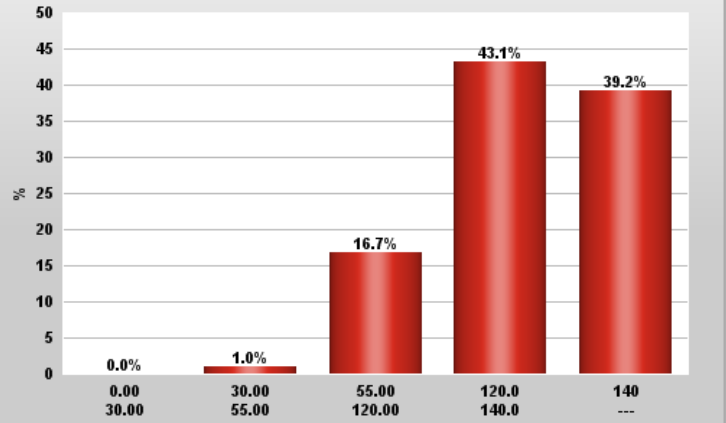
Fines area



Average area (µm²) 529

Classes in µm²

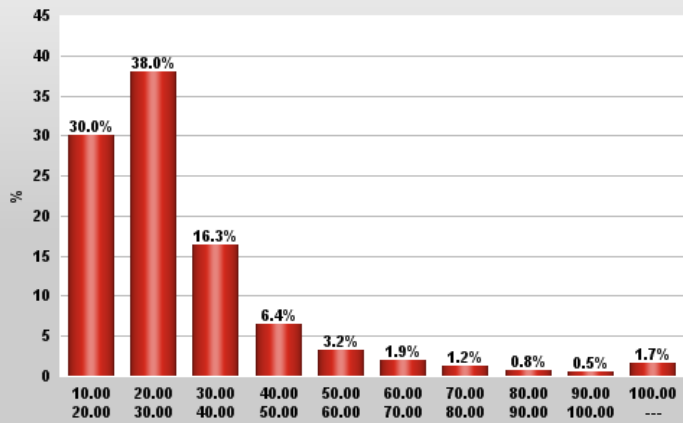
Kink angle



Number of kinks per kinked fiber 1.08
 Fiber kink - Average angle (°) 132.17

Classes in °

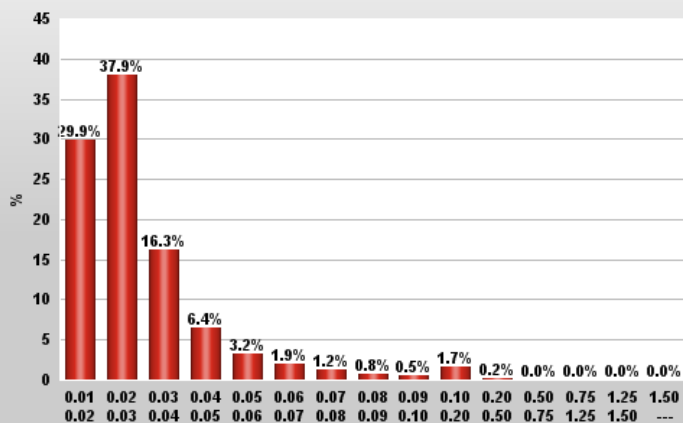
Fines length



Average length (µm) 30

Classes in µm

Fines & Fibers Length

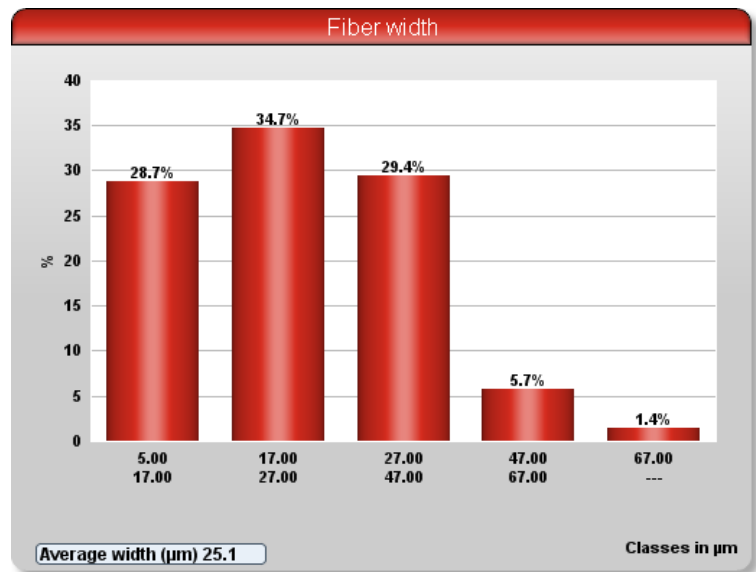
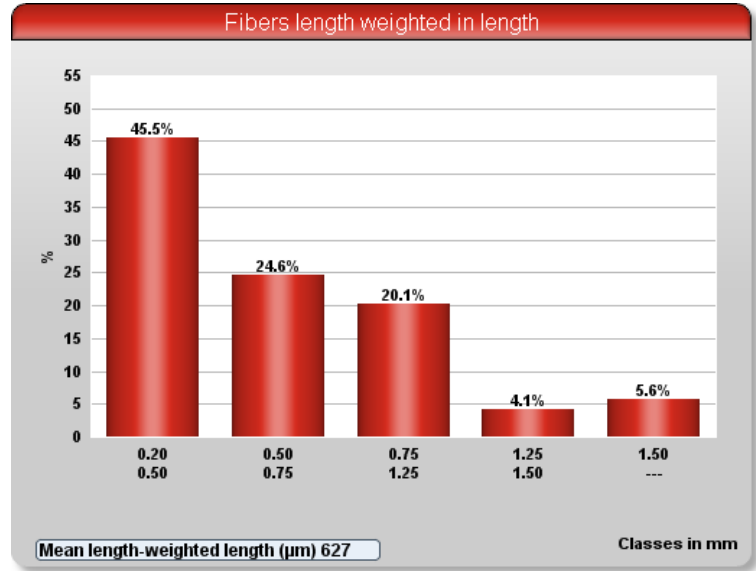


Mean arithmetic length (µm) 30

Classes in mm

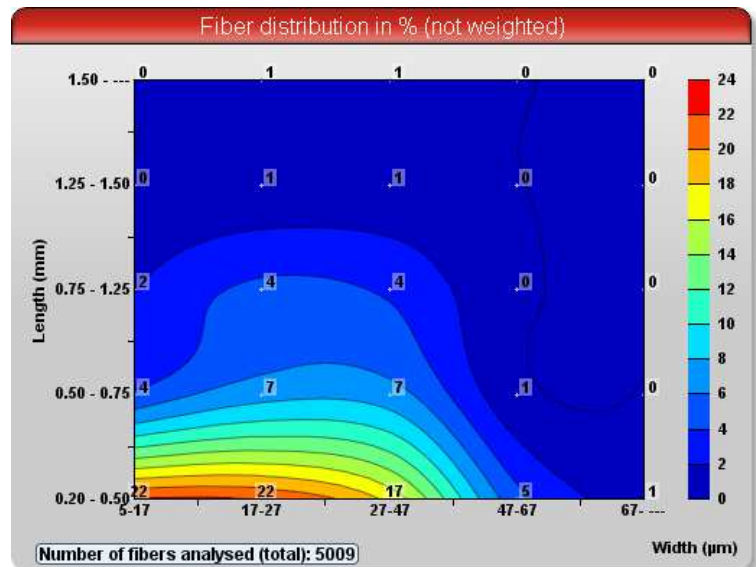
date 04.06.2018
 time 1601
 Consist. (mg/l) 25.9740
 Nb of fibers 5009
 Remark

Date 04/06/18
 Time 16:26:50
 Family HEAD BOX
 Duration 00:04:52



Summary Array

FIBERS (nb)	5009	NB OBJ (million/g)
Length: arithm. & weighted in length	0.480 0.627	
Width (µm)	25.1	
Coarseness (mg/m)	0.5766	
Kink angle (°) Kinked fibers (%)	134 30.5	3.411
Curl (%)	8.4	
Rate in length of MacroFibrills (%)	1.838	
Broken Ends (%)	51.49	
FINE ELEMENTS (% in length)	83.9 4.78	252.451
Percentage of fine elts (% in area)	42.98	



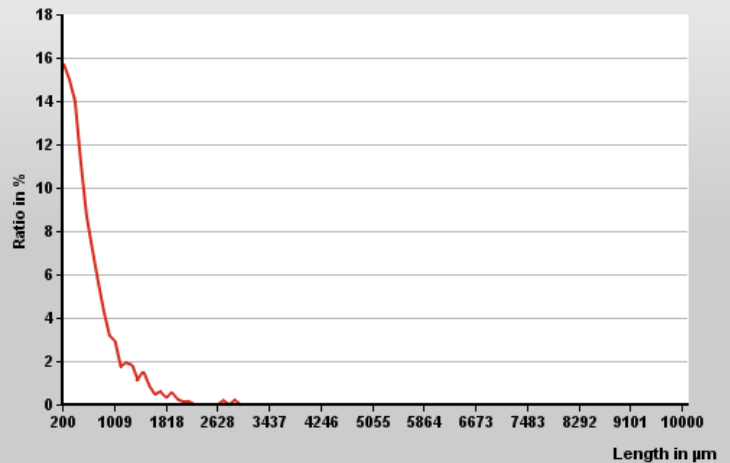
date 04.06.2018
 time 1601
 Consist. (mg/l) 25.9740
 Nb of fibers 5009
 Remark

Date 04/06/18
 Time 16:26:50
 Family HEAD BOX
 Duration 00:04:52

Summary Array

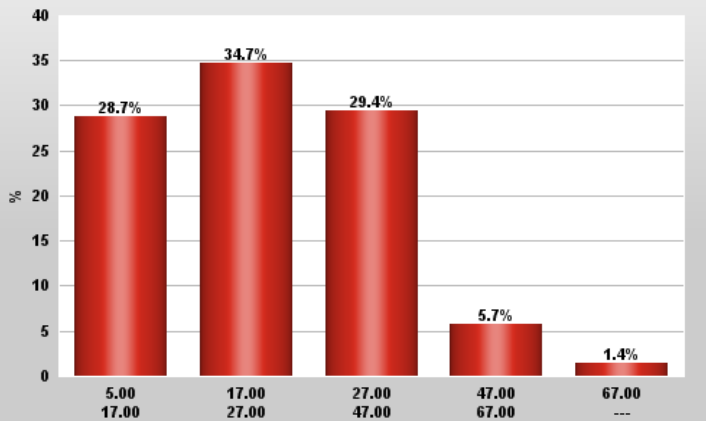
FIBERS (nb)	5009	NB OBJ (million/g)
Length: arithm. & weighted in length	0.480 0.627	
Width (µm)	25.1	
Coarseness (mg/m)	0.5766	
Kink angle (°) Kinked fibers (%)	134 30.5	3.411
Curl (%)	8.4	
Rate in length of MacroFibrills (%)	1.838	
Broken Ends (%)	51.49	
FINE ELEMENTS (% in length)	83.9 4.78	252.451
Percentage of fine elts (% in area)	42.98	

Fiber distribution



Mean length-weighted length (µm) 627

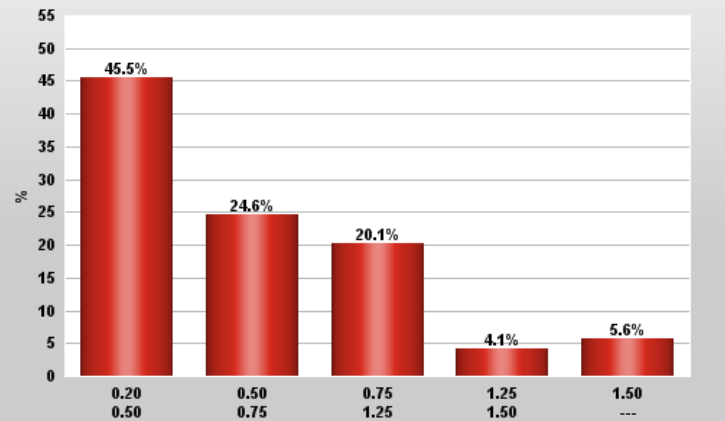
Fiber width



Average width (µm) 25.1

Classes in µm

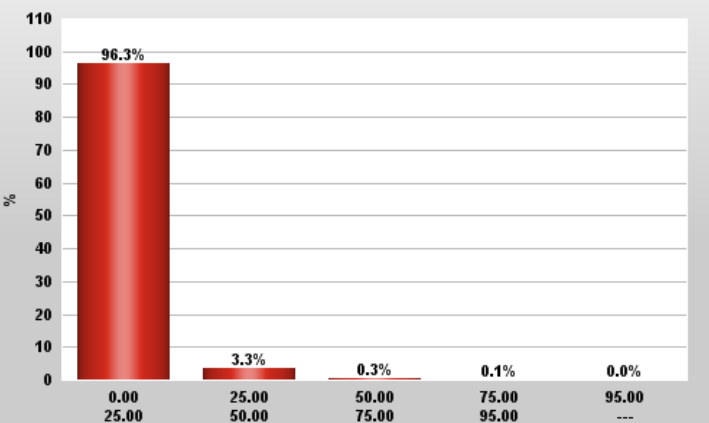
Fibers length weighted in length



Mean length-weighted length (µm) 627

Classes in mm

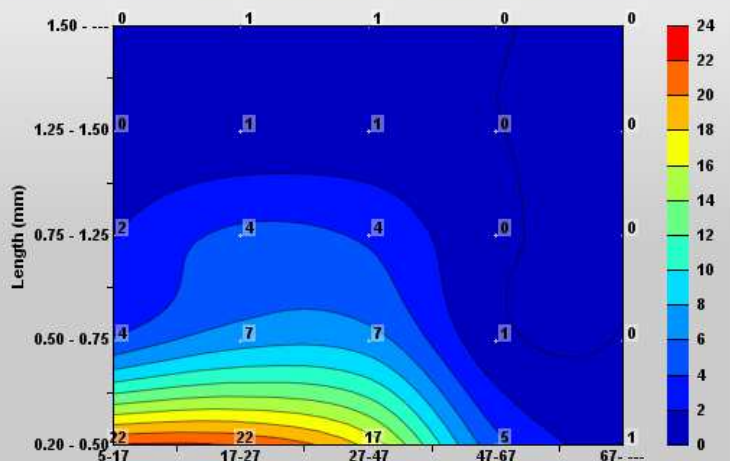
Fiber curl



Average curl (%) 8.4

Classes in %

Fiber distribution in % (not weighted)



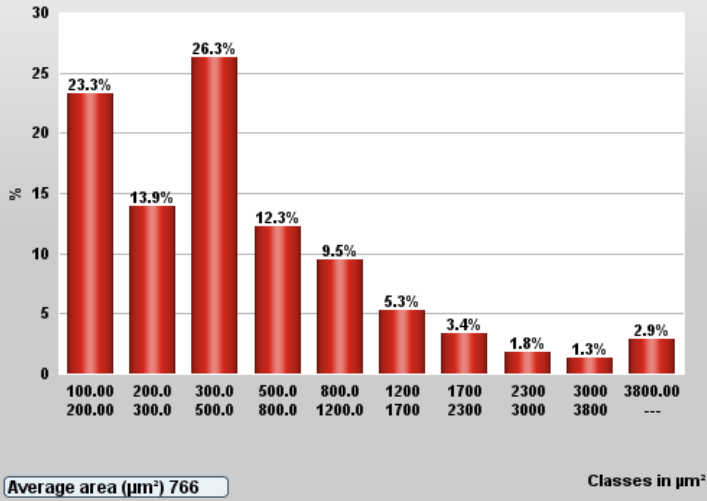
Number of fibers analysed (total): 5009

Width (µm)

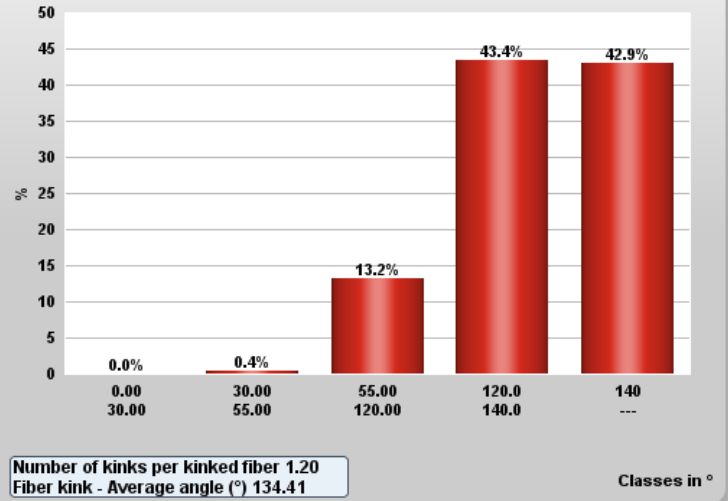
date 04.06.2018
 time 1601
 Consist. (mg/l) 25.9740
 Nb of fibers 5009
 Remark

Date 04/06/18
 Time 16:26:50
 Family HEAD BOX
 Duration 00:04:52

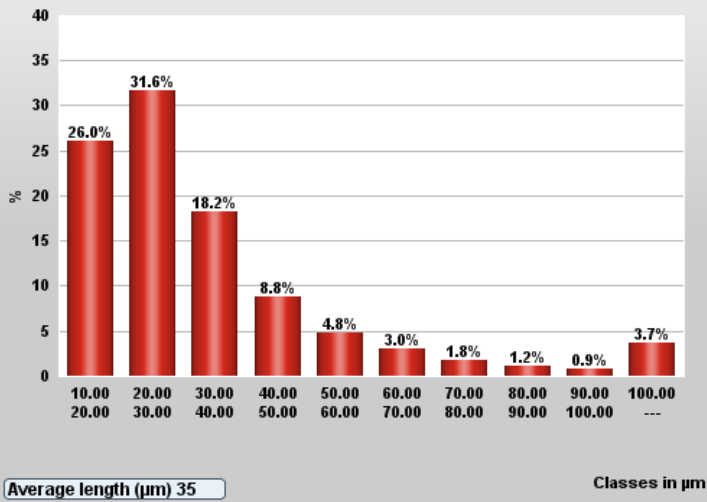
Fines area



Kink angle



Fines length



Fines & Fibers Length

